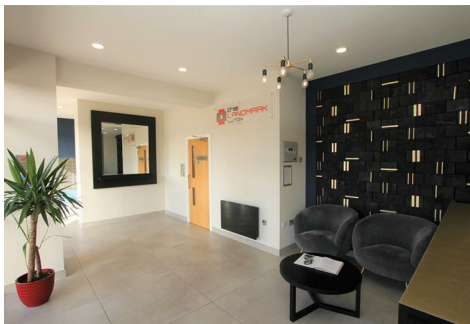




BlueprintProperties
Bringing Home Results



Landmark Flowers Way, Luton, LU1 3GA

£180,000

This one-bedroom Fully furnished flat is located at the brand new 'The Landmark' development in the heart of the town center situated within a few steps of the Mall.

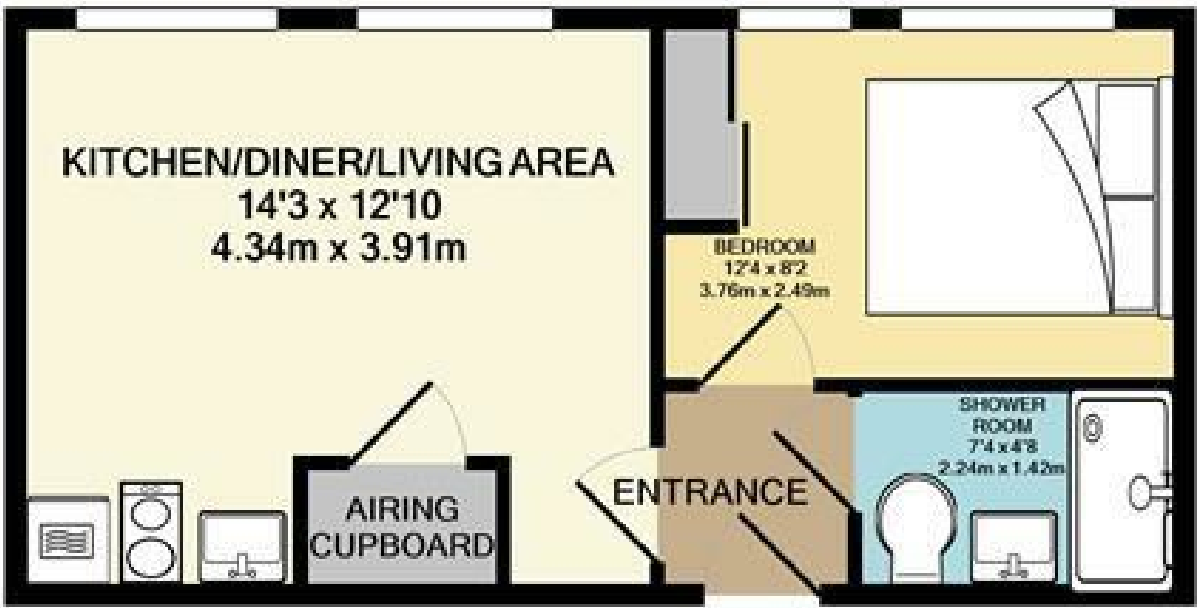
Luton Train station is less than 10 minutes' walk from the apartment. This location is perfect for a working professional.

Internally throughout the property is brand new offering a sharp and detailed finish of high quality.

A double bedroom is on offer benefiting from built-in wardrobe space for extra storage. The room is laid with a high-quality carpet and the shower room is finished to an immaculate standard fully tiled from floor to ceiling.

The kitchen is pure gloss white and offers a built-in fridge freezer, integrated oven, hob, and microwave. The kitchen offers a generous amount of fitted storage, stainless steel sink and over hob extractor.

Floor Plan



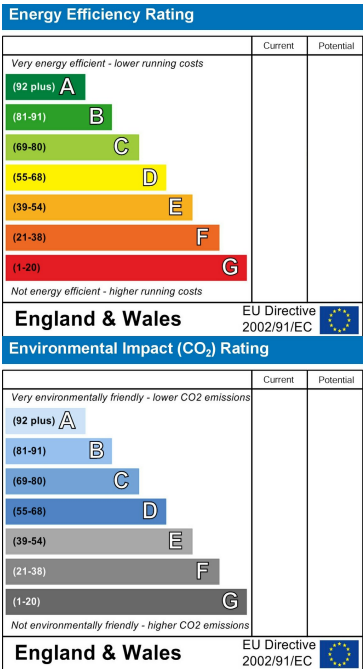
TOTAL APPROX. FLOOR AREA 333 SQ.FT. (30.9 SQ.M.)

Whilst every attempt has been made to ensure the accuracy of the floor plan contained here, measurements of doors, windows, rooms and any other items are approximate and no responsibility is taken for any error, omission, or mis-statement. This plan is for illustrative purposes only and should be used as such by any prospective purchaser. The services, systems and appliances shown have not been tested and no guarantee as to their operability or efficiency can be given
Made with Metropix ©2020

Area Map



Energy Efficiency Graph



These particulars, whilst believed to be accurate are set out as a general outline only for guidance and do not constitute any part of an offer or contract. Intending purchasers should not rely on them as statements of representation of fact, but must satisfy themselves by inspection or otherwise as to their accuracy. No person in this firms employment has the authority to make or give any representation or warranty in respect of the property.